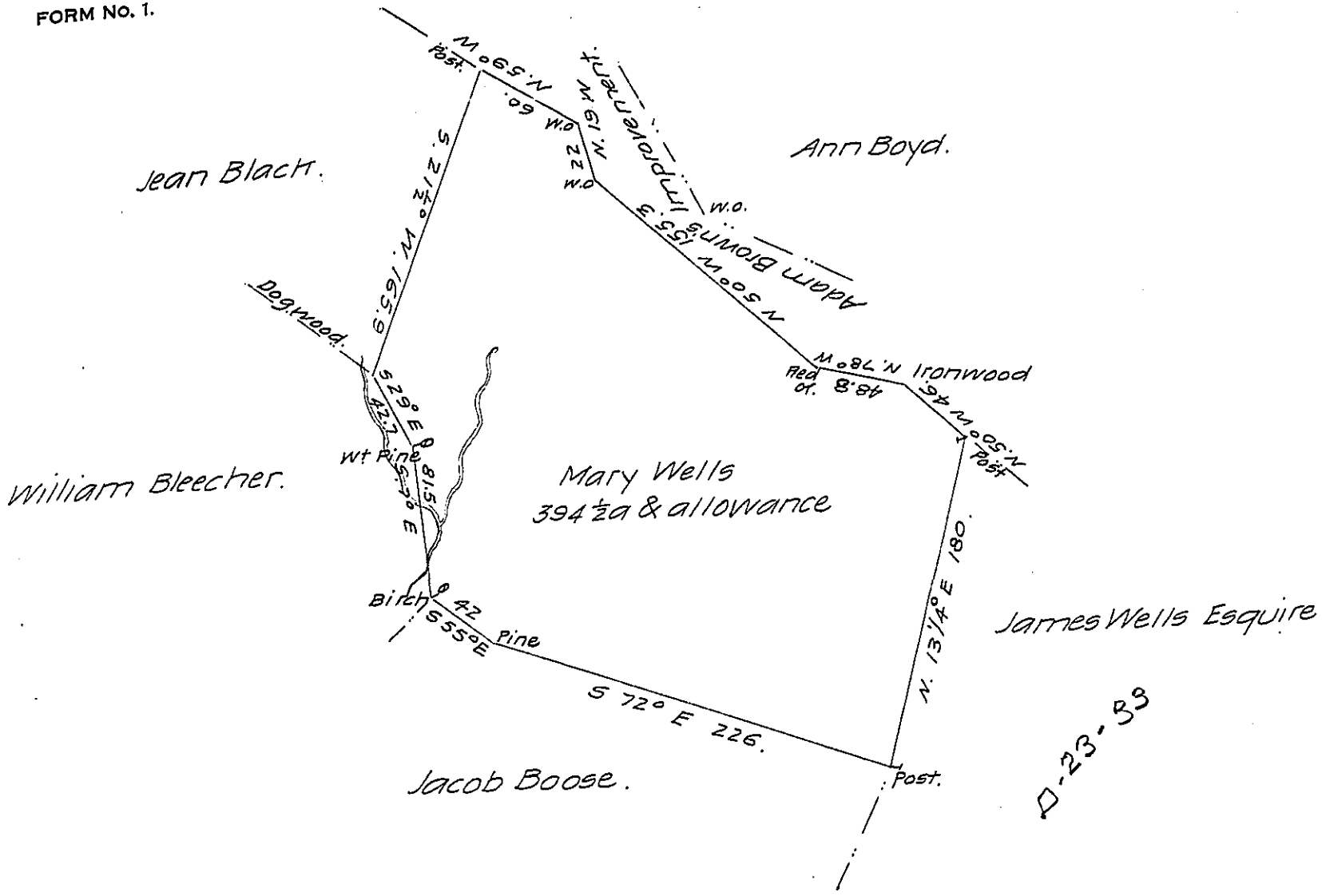


FORM NO. 1.



Situate on the Waters of Brush Creek in Londonderry Township
 Bedford County and Surveyed the 9th day of June 1795 in pursuance
 of a Warrant dated the 7th day of April 1794.

By John Wells (son of Richard)

Approved by

George Woods Junr. D.S.

To Daniel Brodhead Esqr
 Surveyor General.

IN TESTIMONY that the above is a copy of the original remaining on file in
 the Department of Internal Affairs of Pennsylvania, made
 conformably to an Act of Assembly approved the 16th day of
 February 1833, I have hereunto set my hand and caused
 the Seal of said Department to be affixed at Harrisburg,
 this fourth day of June 1907

Henry Howell

Secretary of Internal Affairs.